



Pamela Gaunt

Artwork Proposal for Beatty Park

Client : City of Vincent

July 2014

Concept Introduction

According to the historical information in the briefing document, when Beatty Park opened it, ‘...it was seen as a sparkling contemporary building...a landmark facility, representative of Perth’s emerging status as a modern city.’¹ It is significant that Beatty Park Leisure Centre continues to be a vibrant and highly frequented facility, still relevant to the community today. The leisure centre’s refurbishment has continued a resource that facilitates active bodies within the different spaces in the centre, with many people visiting the centre for the same reasons today as in the 1960s.

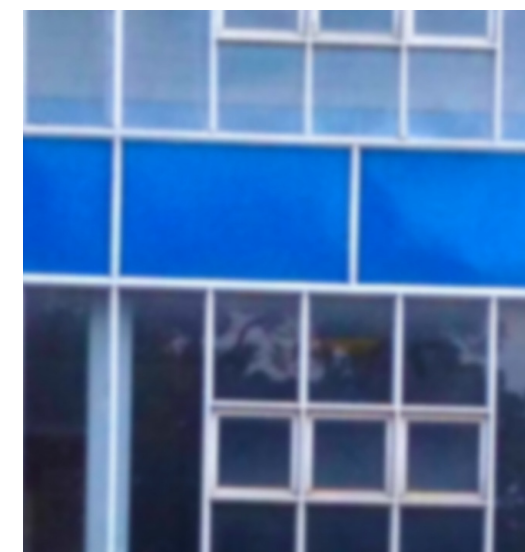
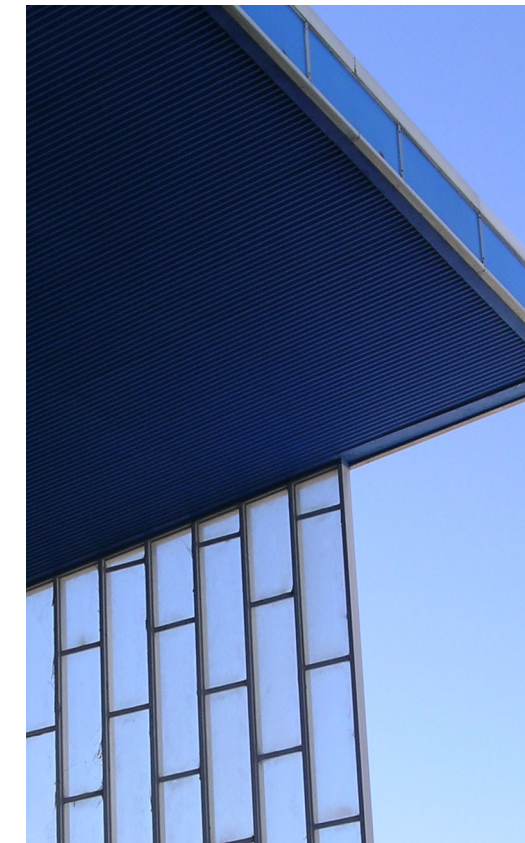
The brief for the Beatty Park Leisure Centre artwork requests a three dimensional artwork that in some way, celebrates, marks, or heralds Beatty Park Leisure Centre, with day and night aspects, and consideration of the allocated site - located at the interface between the old and new architecture. The consideration of artwork iterations in surrounding or adjacent locations was also requested.

In keeping with the City of Vincent’s quest to ensure that Beatty Park remains a ‘state of the art’ recreation facility with ‘high tech’ inclusions in the refurbishment, the proposed artwork seeks to present a contemporary approach with respectful acknowledgement to Beatty Park’s architectural heritage facade.

The scope of Pamela Gaunt’s proposed artwork considers the human activity and energy evident in Beatty Park Leisure Centre’s internal spaces. In many ways, the proposal mimics the above description of the historical Beatty Park (‘a sparkling contemporary building...a landmark facility,’) by promoting an elegant and visually engaging externally positioned illuminated and animated glass column, with embedded historical architectural imagery on its surface. The column stretches to the first level of the new architecture. Because of the integrated illumination in the column it will not require up-lighting. The proposed artwork also includes two horizontal linear strips of related patterned and etched glass attached to the two surrounding wall surfaces.

In its simplicity, the illuminated (sparkling) glass ‘tower’ can be seen as a patterned, triangular glass column stretching 4.5 metres high - almost half the height of the old diving board, which has been removed. The conceptual unfolding however, reveals its complexity. Through ambient, live data visualization, the column visually presents the different levels of human activity within selected internal spaces of the centre, to its exterior. In other words, ambient audio material generated from human movement within internal spaces (e.g. outdoor pool area; indoor pool area; gym; group fitness space; spin bike room;) is translated/converted into a visual linear language that is represented via coloured and illuminated sections conveyed to the artwork column. The illuminated sections become changing visual areas, ‘shapes of sound’² within the column that respond to the amount of activity. For example, sounds such as: water splashing, human voices, clinking of gym equipment, etc. will all be converted and conveyed to the LEDs. In this sense, the work is reactive rather than interactive and mediates between the physical and the visual, the internal and the external, the old and the new.

The aesthetic language of the column’s surfaces will be created by using the window proportions of the heritage-listed façade and their unique configuration, as a design source to generate interesting motifs for the glass. This will be achieved through repetition, layering and changes in scale. Aspects of repetition in the lighting and patterning of the column also become metaphorical suggestions of the cyclical/rhythmical/repetitive activities and movements in the various internal spaces.



¹ Page 2, in the briefing document for *Expression of Interest for Beatty Park Artwork*, 2014.

² Peter Cho, *Takeluma* exhibition, Telic Gallery 2005, (Black Matters, 34/05) pg.149.

The strong aesthetic of the historic window ‘motif’ can also be applied to the various artwork iterations in the adjacent surfaces of the wall. By foregrounding the iconic patterning at the juncture of Beatty Park’s contemporary and historic architectural façades, it further assists in visually connecting the old and new architectural sections of Beatty Park.

The artwork will avoid a didactic interpretation of live data streaming, through the approaches outlined below:

- The aesthetic and sensorial considerations of the etched and layered patternation on both front and back surfaces of the glass that will also disguise the LED ‘dotting’ factor.
- The innovative use of LED light programming and positioning to animate the column
- An unfolding sequence of longer visual effects as one moves around the column, with sensorial changes in colour, shadow and light enriching the experience.
- The surrounding etched glass on the adjacent walls that will act as mirror glass and create reflections.

The column will offer viewers a changing experience of intrigue and engagement through day and night. The illumination will come into it’s own during the nocturnal experience, and operate in a more subdued way for the day experience. The daytime changing solar conditions will result in constant ‘sparkling’ shifts in light, colour, shadow, reflection and refraction.

A colour code will be etched into a stainless steel ‘collar’ at the base that offers the viewer information about the relationship between the illumination colours and the internal activities. This information is intended to enhance or enrich the viewers’ knowledge of the conceptual underpinning of the artwork. However, it is important that the column operates as a visually engaging and sensorial piece in its own right.

It is anticipated that a QR code could be placed in a strategic location within the artwork site. The potential for this to connect to the City of Vincent website with a link to the artwork concept and development, would provide enriched meaning for interested Beatty Park clients.

Wall Artwork and Other Iterations

The intention for this aspect of the proposal is to further activate the bare wall surfaces surrounding the column location by the addition of two linear, horizontal, patterned glass strips. The surface will be etched with layered, patterns similar to the column or layered static visualizations of elements of the audio within the internal spaces. The black rear surface of the grey glass will assist the glass to become mirror-like, and will reflect the visual activities of the column, particularly at night. It is intended this addition will tie the work more strongly to the site and the architecture – especially with the proposed landscaping outlined below.

Other Iterations of the Artwork were considered as follows:

The potential for the aesthetic language of the artwork column to intervene in either:

- The entrance windows of the new section of architecture
- Or the balustrading adjacent and to the right of the entrance stairs

This can be achieved using a subtle frosted patterned design (or laser cut) on transparent vinyl film to sections of the windows/balustrade.

However, this was not able to be considered due to budget constraints.

If the City of Vincent is able to contribute to the landscaping, it is suggested that paving around the column be constructed in the same configuration as the old Beatty Park window arrangement borrowed for the column pattern. Small gaps can be left for the insertion of greenery. Seating would also enhance the site.



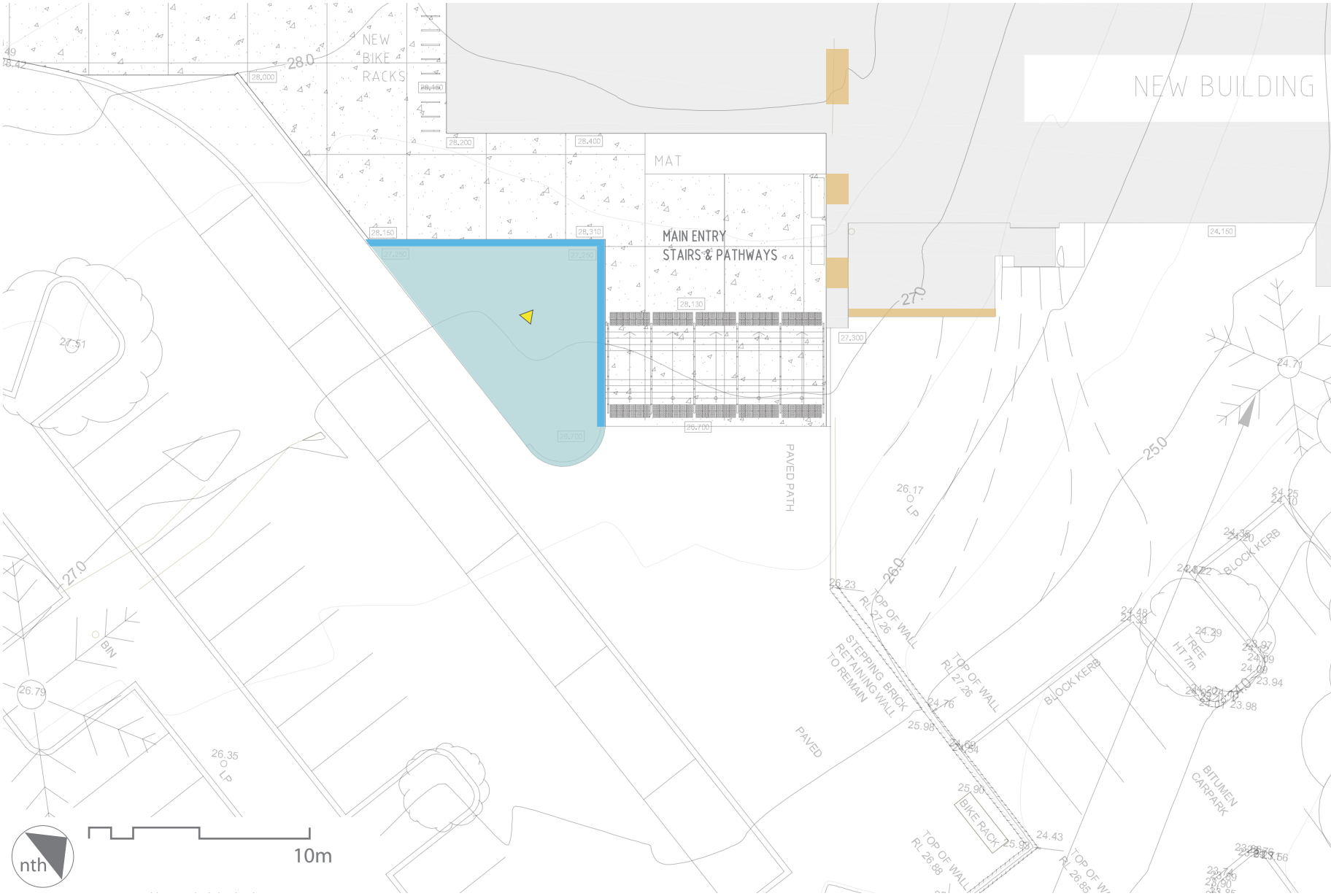
Alternative Proposal (First Idea) – a brief statement

This proposition was originally the artist’s preference for this submission. However, because it was not viewable from Vincent Street, the light column replaced it.

The original thought was to create a large patterned, illuminated glass ground piece embedded into the site, capable of being walked on by children/adults who pass by the artwork location. Being flush with the ground, the work would metaphorically reflect the idea of a pool through translucency, movement and patterned reflection. The same conceptual underpinning applied regarding the translation of internal audio into linear, illuminated and animated visual elements – except the configuration would be organised in a ‘pseudo’ map-like configuration that reflects the internal spaces documented above. A one-metre wide horizontal strip of patterned glass would be located on the walls surrounding the embedded ground piece. The proposal fits within the budget.

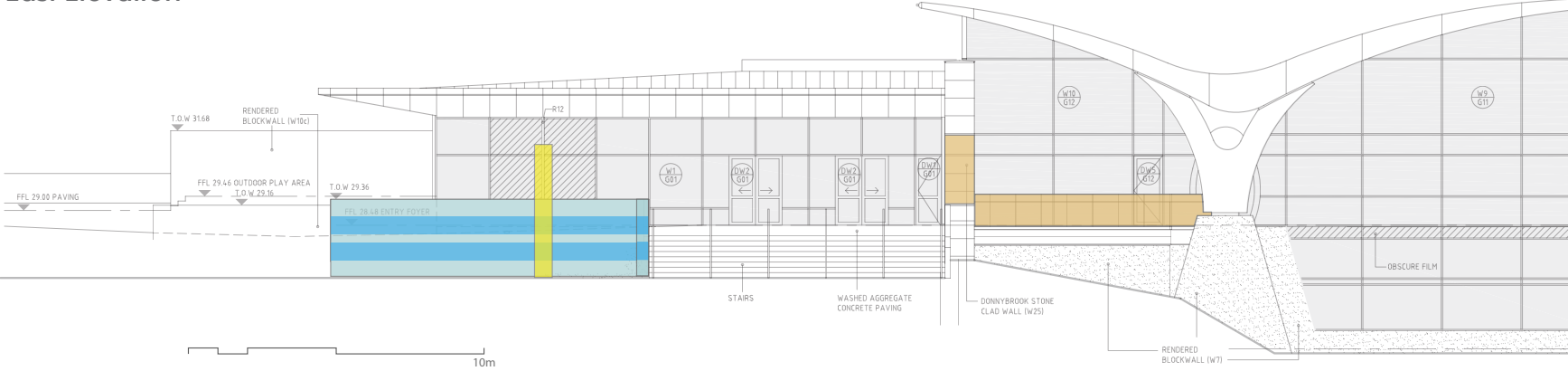
Artwork Location

- Landscaped paving and possible seating
- Glass Column
- Wall artwork
- Other iterations of the artwork for consideration at entrance windows and balustrading



Location Plan

South East Elevation





External View



Lighting effect from
previous commission
by Pamela Gaunt



Glass column with wall artwork



Alternative proposal



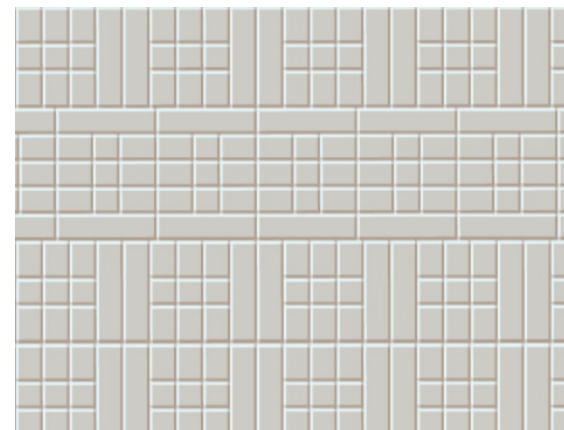
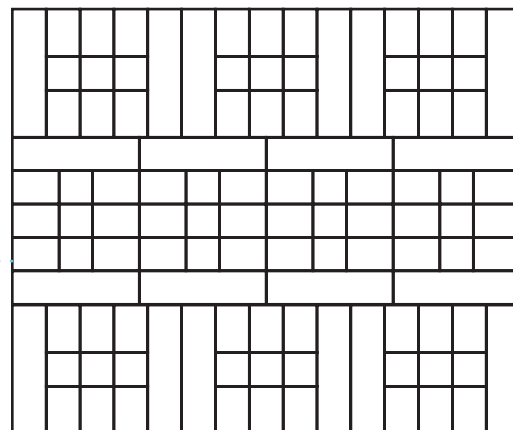
Glass floor insert from previous commission
by Pamela Gaunt





Suggested Paving/Embossed Concrete

Paving concept uses the configuration from the old Beatty Park windows



Windows or Glass Balustrading



Laser cut vinyl adhered to sections of the glass surface will continue the aesthetic language from the heritage building and the artwork column.



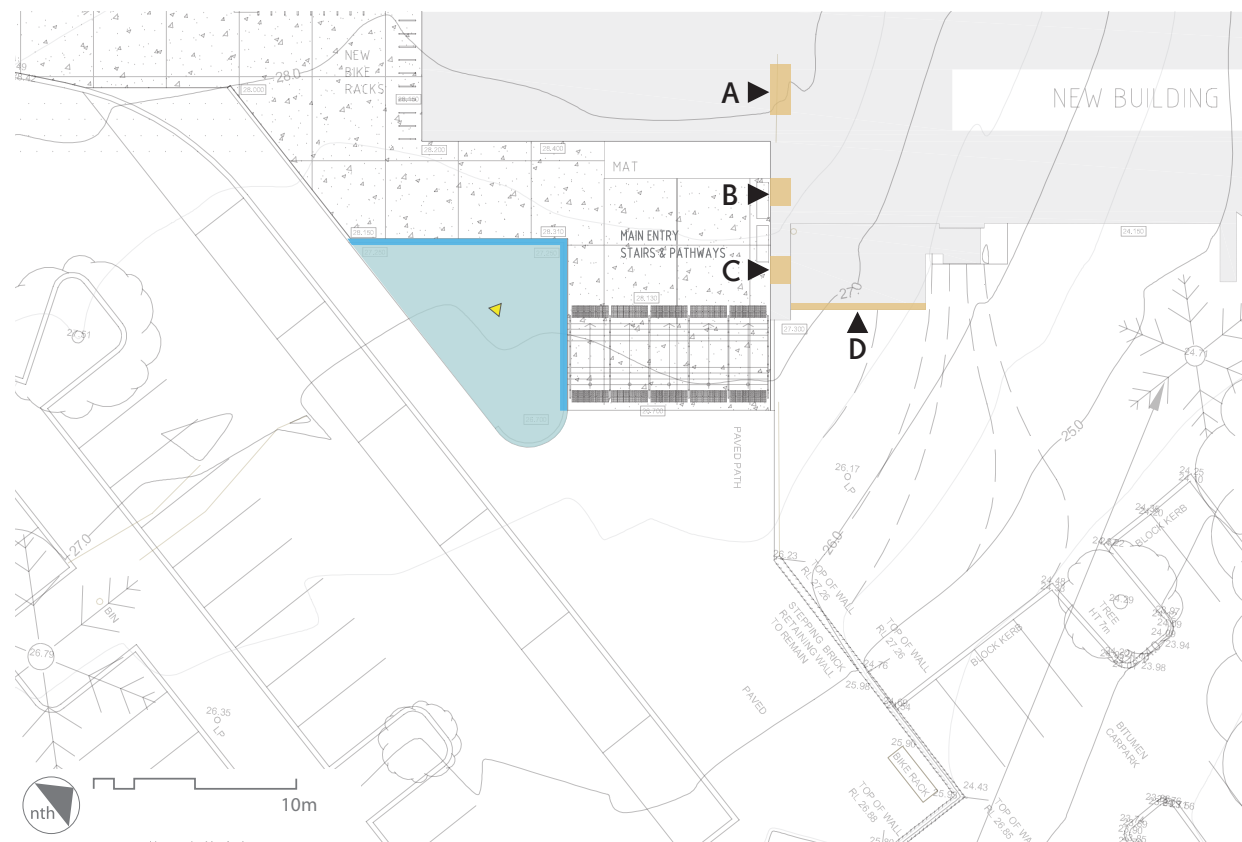
A



B



C



D

Sites for Sound Collection



Material / Technical / Structural Details

General

Dimensions are according to the drawings.

A glass prototype of the column will be created prior to design documentation approval.

The City of Vincent has agreed to bring power to the site. The entire work will require a single 240v earthed circuit.

Power consumption for the illumination will be low and can be restricted to Beatty Park opening times. Design documentation will detail exact consumption figures but the total consumption should be approximately 4 amps, cheaper than up lighting.

Glass Column

The triangular column will be created from 4.5 metre panes of toughened and laminated glass.

1 panel to be removable to allow access for the maintenance of the LEDs; 2 panels cast into concrete footing as required by engineer.

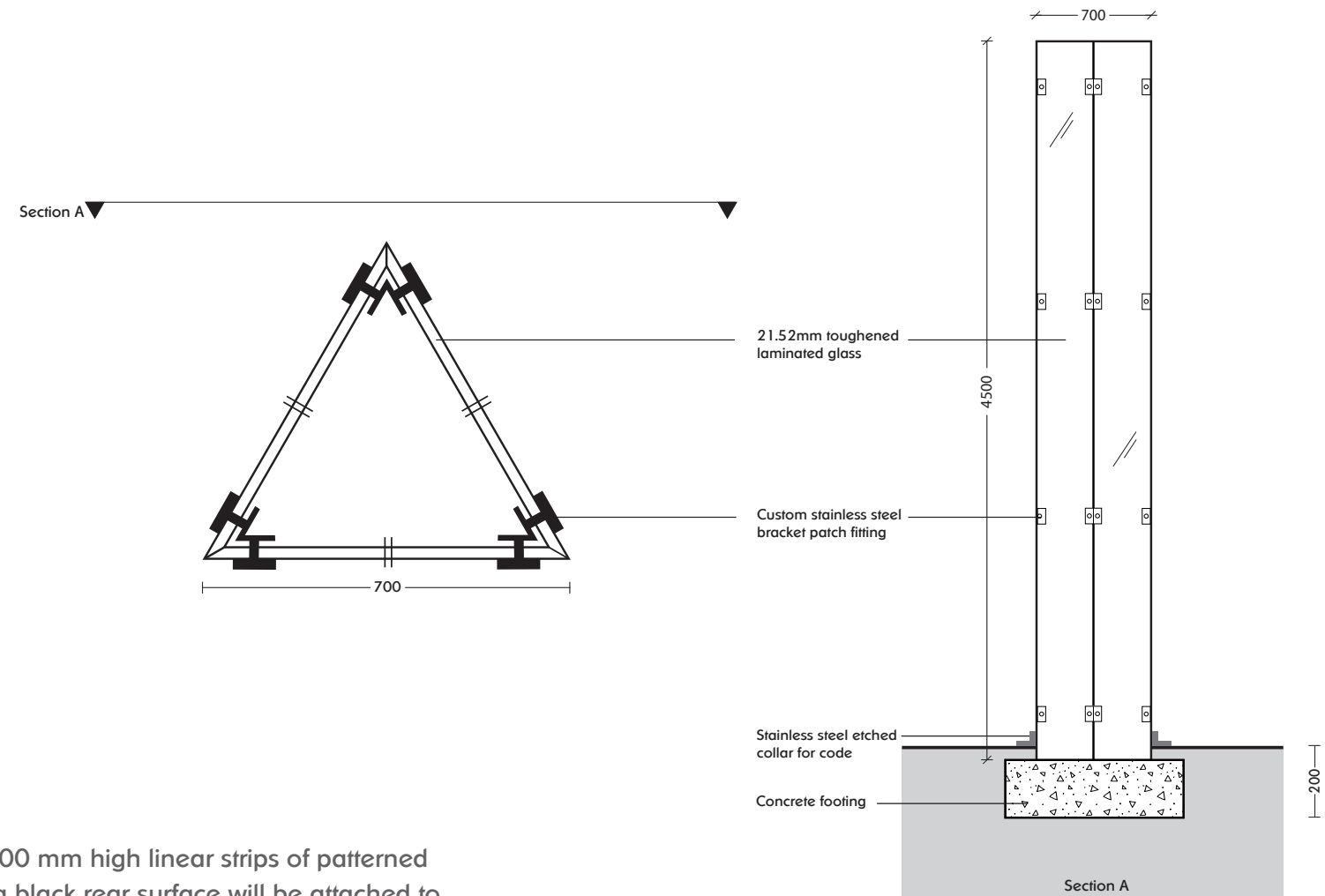
Glass: 21.52mm 3 x 4500 x 700mm edges polished with 8 holes in each panel custom s/steel bracket patch fitting.

The glass structure will also be engineer approved and conform to all building codes for glass structures. It will be sealed and waterproofed with consideration for condensation moisture.

The LEDs will be supported with a custom designed aluminium armature to fit inside the column and will be connected to electrical wiring through conduit in the base of the concrete footing.

The programming aspect of the column will be housed within the internal power switch box located on the plan on the previous page.

Live data audio collectors (microphones) will be located within the prescribed internal spaces, as discussed above, in consultation with relevant Beatty Park management staff (see relevant diagram). The LED's will reflect the internal human activity at any one moment in time and change accordingly.



Glass Wall Artwork

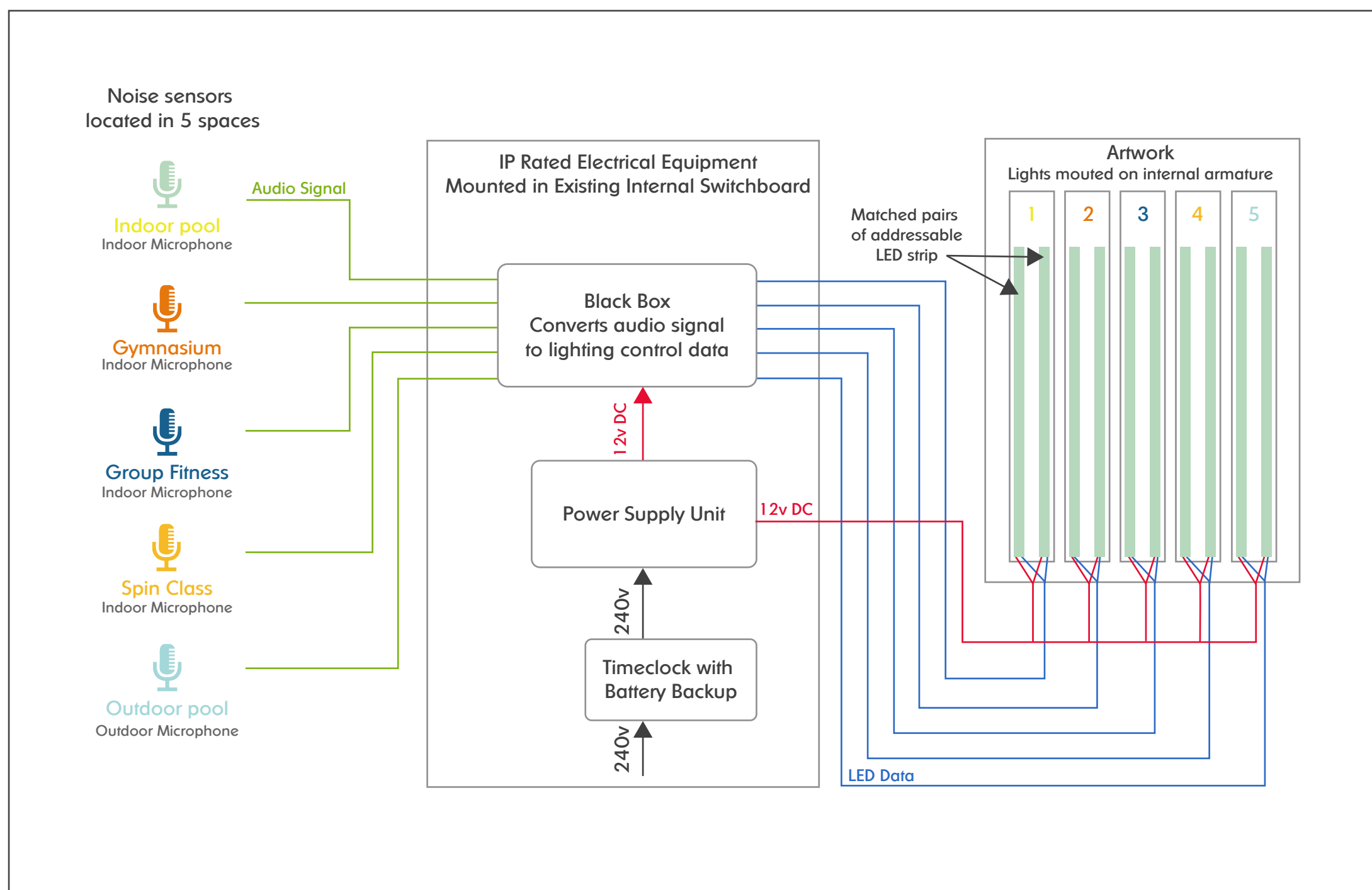
- Two horizontal x 600 mm high linear strips of patterned etched glass with a black rear surface will be attached to the wall surface surrounding the column. Material: 6mm grey glass with 1 – 2 colour Imagink print. Silicone fixed to existing wall.
- The glass will conform to glass building codes.

Windows or Balustrading Intervention

- Surrounding opportunities are considered as per page 7.
- The artwork interventions in the existing architecture would promote subtle pattern and continue the aesthetic language from the heritage building windows and the artwork column. The application uses laser cut vinyl sections adhered to existing glass surfaces.

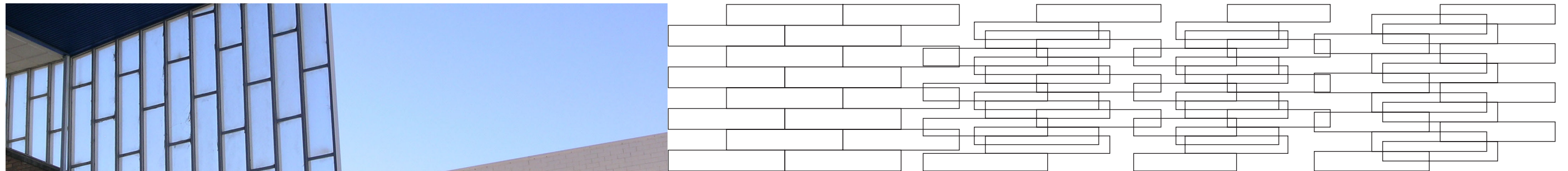
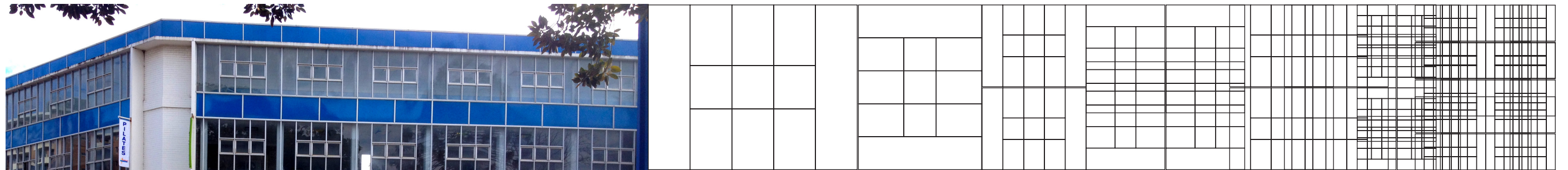


Overview of Electrical Equipment

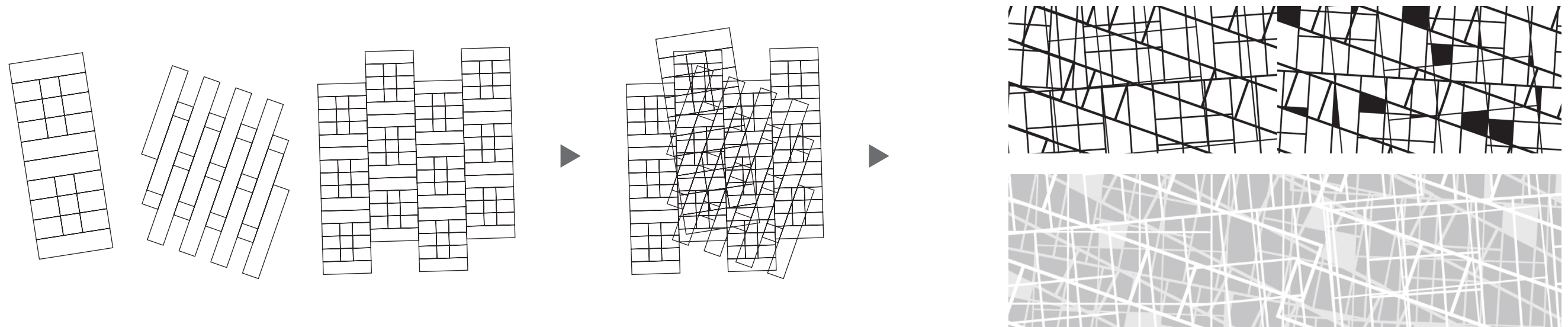




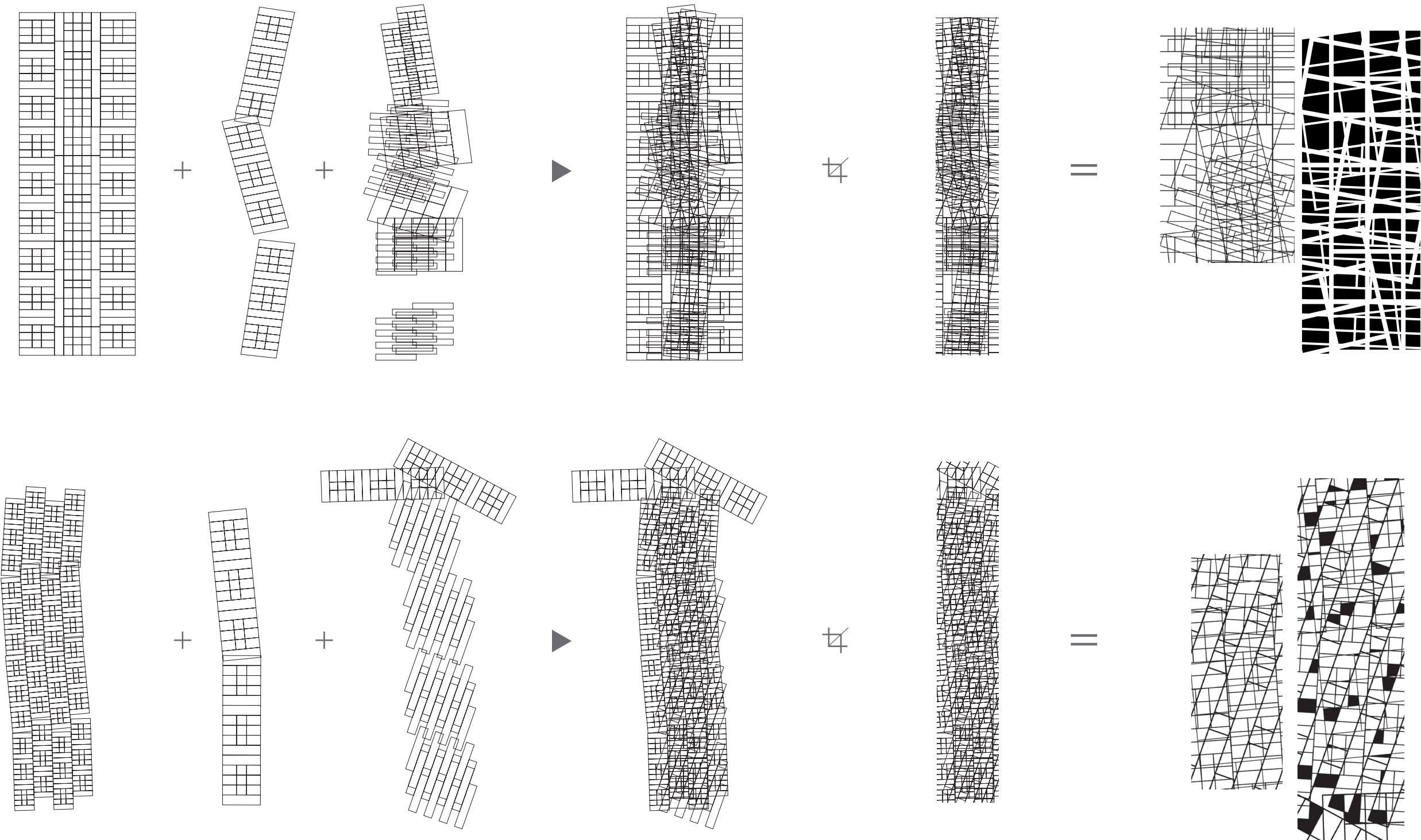
Aesthetic Language of Column



Aesthetic Language - Wall Glass Pattern



Aesthetic Language - Column Pattern





Budget

Glass components – surface treatments, fabrication, engineering, prototype \$29,000.00
Lighting/Programming/Install/Electrical/Audio equipment and install \$18,000.00
Digital Design \$3,500.00
Concrete footings & form work \$1,600.00
Engineering drawings and consultancy \$3,500.00
Armature, Stainless steel and other metal fabrication and install \$4,000.00
Freight & Equipment hire \$2,000.00
Artwork vinyl interventions (windows or balustrading) \$1,400.00
Contingencies \$7,000.00

Artist's Fee: \$30,000.00

Total ex gst: \$100,000.00

Timeframe

Late November-Early December 2014
Design Documentation, samples and prototype completed for approval
Studio visit

January – February 2015
Final development of digital designs for glass fabrication
Fine-tuning of lighting/audio programme

March – April 2015
Fabrication of artwork components

May 2015
Installation of all artwork components
Photographic documentation of artwork in situ





Major Industry Partners

- Cooling Brothers Glass
- Light Application - Adam Wurtz
- Digital Design - Quyen Do
- Engineering – Brian Nelson, Capital House
- Artcom - Metal fabrication/etching and vinyl cutting for windows/balustrading

Acknowledgments

City of Vincent
Beatty Park Leisure Centre
Jenny Beahan – Art Coordination
Cooling Brothers Glass
Quyen Do - Digital Design
Adam Wurtz - Light Application
Artcom



Kings Park Education by Pamela Gaunt
Artwork Metering Column - showing the relationship between power consumed and solar power generated.

